

2026 VANCOUVER INTERNATIONAL BOAT SHOW

EXHIBITOR MOVE IN/OUT INFORMATION

Questions? Contact Rob Scott rob@robscottprod.com or 604-644-7862

The Vancouver International Boat Show will be at the Vancouver Convention Centre West & Granville Island from January 14-18. Reminder: the indoor venue has relocated just for 2026 and will NOT be held at BC PLACE. In-Water move-in/out will be sent separately.

BOAT/BULK EXHIBITOR INSTRUCTIONS

HOLDING LOT/STAGING YARD (Starting 8am January 10)

We have a new location for the HOLDING LOT/STAGING YARD, (LOT 4) at 601 W WATERFRONT Road just west of Crab Park (north foot of MAIN STREET) just east of Helijet. You can use 601 W Waterfront Rd for directions, note the lot is on the right side of the driveway. There will be Boat Show Staging Yard signage on the lot fencing to identify. This is a large gravel lot, completely fenced.

The lot will open at 8AM on Saturday January 10 and remain open until noon on Wednesday January 14, it will then be locked until 2PM on Sunday January 18th for move out.

All boats and trailers MUST be removed from the lot by 8PM Monday January 19. The lot will have show personnel or security during all the time the lot is open. There is no security on site when the lot is locked.

NOTES

- Please stage your boats/trailers as compact as possible,
- Please ensure that you don't block any other boats into their spaces as move-in times may differ from yours,
- Do not leave any valuables on the boats, utilize trailer locks etc,
- Due to insurance requirements, exhibitors are NOT ALLOWED to leave trucks, cars or any motorized vehicles in the holding lot overnight or during show days.

RECAP ON HOLDING LOT/STAGING YARD

Lot opens at 8AM on SATURDAY JANUARY 10 thru to WEDNESDAY JANUARY 14 at NOON, LOT IS THEN LOCKED with no access until SUNDAY JANUARY 18 at 2PM for move out and remains open until 8PM on MONDAY JANUARY 19 ALL BOATS and TRAILERS MUST BE VACATED by 8PM MONDAY JANUARY 19. There is NO SECURITY ON SHOW DAYS when lot is locked.

MOVE-IN PROCESS: BOAT/BULK Exhibitors

Move in of the boat/bulk exhibit space will be scheduled on an individual basis, based on floor location, booth number and boat orientation. You will be contacted by Rob Scott to review your Boat and Equipment Handling Form. Please submit forms to Rob Scott rob@robscottprod.com, any questions call 604-644-7862

MOVE-IN HOURS FOR BOAT/BULK EXHIBITORS

Sunday January 11 at 2PM to 9PM

Monday January 12 8AM to 9PM

Tuesday January 13 8AM to 9PM

Final set-up to be completed by 11:30am. Show opens at noon on Wednesday January 14

ALL BOATS ON TRAILERS SHOULD PROCEED TO THE HOLDING LOT/STAGING LOT FOR CHECK IN. ALL BOATS/BULK EXHIBITORS with the odd exception will enter via WATERFRONT C DOOR at the western end of WATERFRONT ROAD.

BOAT/BULK exhibitors entering via WATERFRONT C DOOR DO NOT need to use the Voyage Control booking system.

MOVE-OUT PROCESS and HOURS: BULK/BOAT EXHIBITS

Show closes at 5PM, aisle carpet will be removed when show consumers are no longer on the show floor. The move out of bulk/boat exhibitors will start as soon as aisle carpet is removed, with priority given to exhibitor that have “clear access “to Waterfront C door. We will have forklifts and a forklift with trailer ball attachment to assist. Exhibitors that will move out via the loading docks will require a VOYAGE CONTROL booking, obtained at the VCC desk on site on Sunday January 18. VOYAGE CONTROL will not be required to access the loading docks on Monday January 19.

Move-out hours for Bulk/Boat Exhibits

Sunday January 18 6PM -12MIDNIGHT (once aisle carpet is removed)

Monday January 19 8AM-8PM

BOOTH EXHIBITOR INSTRUCTIONS

MOVE-IN PROCESS & HOURS: Booth Exhibitors

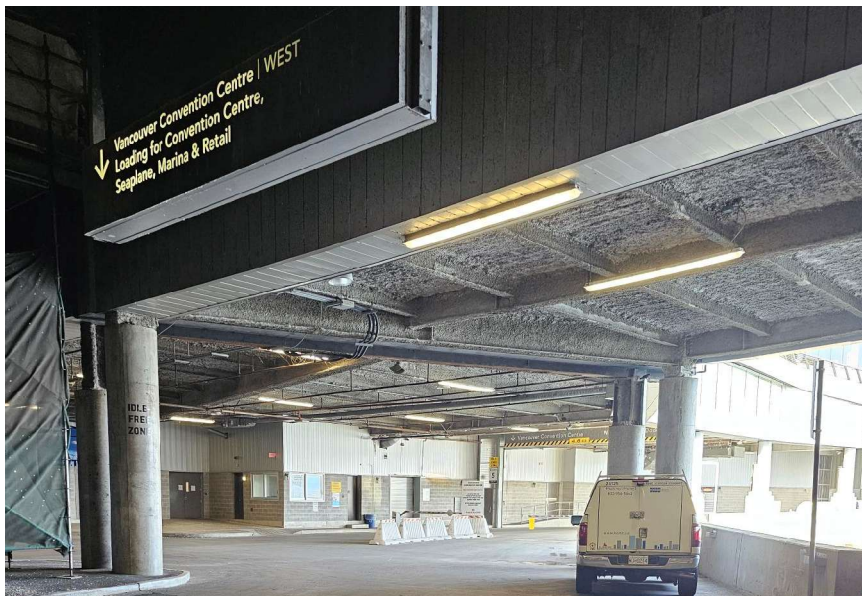
Move-in for the booth spaces (Marketplace section) will be assigned specific days/times based on the location of your space in the venue and your requirements. The range of the schedule is:

Monday January 12: 8AM-2PM, 2PM-8PM, Tuesday January 13: 8AM-2PM

Wednesday January 14: 8AM-11AM hand carry/final set-up. Show opens at noon.

NOTES

- Access is via Waterfront Rd. As you approach the building watch for driveway on the right and follow the sign that says Vancouver Convention Centre WEST, Loading for Convention Centre, Seaplane, Marina & Retail.



- The VANCOUVER CONVENTION CENTRE uses a VOYAGE CONTROL program to control traffic flow for move-in.
- YOU WILL NOT BE ALLOWED TO DRIVE TO YOUR BOOTH, you will book a window of time ONLINE, within your designated time window, arrive at security entrance to check in and then drive to loading docks to unload.
- The show will provide forklift for palletized loads and push carts for unloading and transferring to your exhibit booth. If you have your own cart, please bring it.
- SEE VOYAGE CONTROL information attached and colour coded move-in map.

Steps to follow:

1. Know your BOOTH NUMBER, refer to colour coded map to find your MOVE -IN TIME WINDOW AND CODE
2. Go ONLINE as per instructions to book your arrival time.
3. When you arrive at the Convention Center on Waterfront Rd watch for the driveway on the right and sign Vancouver Convention Centre WEST loading for Convention Centre
4. Drive up to security to check in, once checked in, proceed to loading docks for unloading.

We will have forklifts and trailer ball equipped forklifts to assist in move in/set up. If you have your own trailer moving equipment, please bring it.

STORAGE

There will be storage in a draped off designated area on the show floor. Accessible storage will be within the same area. This is not a secure area.

MOVE-OUT INFORMATION and HOURS: BOOTH EXHIBITORS/MARKETPLACE

Sunday January 18 6PM to 10PM (once aisle carpet is removed) – Voyage Control booking required

Monday January 19 8AM to 6PM - Voyage Control booking not required

Booth exhibitors (Marketplace) will be using an APPROVAL process on Sunday night for move out, once your booth is packed up you will request an “approval slip” at which time you will request a Voyage Control booking at the VCC Exhibitor Services desk on site, and you will then proceed to bring your vehicle to load out. There will be limited **hand carry** loading out the front doors from the Marketplace on Sunday night. We will have forklifts and push carts to assist load out.

SHIPPING DETAILS FOR ALL EXHIBITORS

DIRECT SHIPPING TO SHOW SITE

Show Management will accept exhibitor shipments as of January 12. Advance Shipment arrangements can be made directly through Global Convention Services. Forklifts cannot handle goods unless safe, proper pallets and cradles are provided by the exhibitor. There is no charge for these services, provided guidelines are followed.

SHIPPING ADDRESS

Vancouver International Boat Show
Exhibiting Company Name / Booth Number
Vancouver Convention Centre West
1055 Canada Place
thru Waterfront Road
Vancouver BC Canada
V6C 0C3

IMPORTANT SAFETY REQUIREMENTS

All persons on site during move-in/out are required to wear a reflective high visibility vest. If you do not have one, VCC has them for sale.

All persons moving freight, or in the vicinity of forklifts must wear CSA approved steel-toed footwear in accordance with WorkSafeBC Occupational Health & Safety Regulations.

All persons participating in, or in the vicinity of the movement of heavy overhead loads, must wear protective headgear.

Children under 15, including infants are prohibited from the show floor during move in/out hours.

PERSONS FOUND NOT ADHERING TO THESE SAFETY REQUIREMENTS WILL NOT BE PERMITTED ON SITE.

USE OF ADHESIVE /CARPET TAPE

Use of guaranteed residue-free, double sided carpet tape must be used to ensure your company does not incur cleaning costs. Approved tape will also be sold by Global Convention Services on-site all move in days their on-site office will be in Show Office A at the northern end of the Marketplace

Page 5 outlines the colour coded map with assigned dates and windows of time for move-in access

Page 6 outlines the instructions for Voyage Control



SAVE TIME WITH THE FOLLOWING SERVICE PROVIDED BY THE VANCOUVER CONVENTION CENTRE

VEHICLE ACCESS TO LOADING BAYS (VOYAGE CONTROL)

- 1) Go to <https://voyagecontrol.com/vancouvercc>
- 2) Create a profile by clicking on “Log In/Sign Up”.
- 3) Click on “Make a Booking” and select the event: Vancouver International Boat Show 2026.
- 4) Choose your User Type & Booking Code based on the colour code assigned to each space shown on the floorplan on page 5.

User Type	Booking Code
Large Exhibits move-in - Green Zone	LE26GR
Large Exhibits move-in - Blue Zone	L1937B
Marketplace Move-in Zone 1 (Orange)	M1739R
Marketplace Move-in Zone 2 (Pink)	P1575K
Marketplace Move-in Zone 3 (Yellow)	Y1358W

- 5) Once you select the Phase, Date, Access Point and Vehicle Type, click on “Get Times” and select one of the available times. Greyed-out times mean they are full and no longer available.
- 6) Complete your contact information and ensure to enter your Booth Number/ Name. Entering Driver and Vehicle Information will allow a faster entry.
- 7) Please ensure that all drivers have a booking pass (printed or electronic) on hand upon arrival at the Loading Dock. Drivers that do not have a booking pass will delay check-in.
- 8.) If you are **NOT** accessing the West Loading Dock, booking is **NOT** required. If you are hand carrying through the parkade, Voyage Control bookings are not necessary.
- 9.) All persons must respect the safety zones as designated for each move-in and move-out.
- 10.) Except in specific conditions, children under the age of 15 and pets are prohibited on the event floor during move-in and move-out.

High-visibility vests must be worn by all exhibitors, contractors and booth builders during move-in and move-out. Please bring your own PPE or order vests from us. You will need it before your vehicle comes on-site.

FOR MEDICAL EMERGENCIES, contact on-site First Aid at 604 647-7500 (7500 from any house phone).